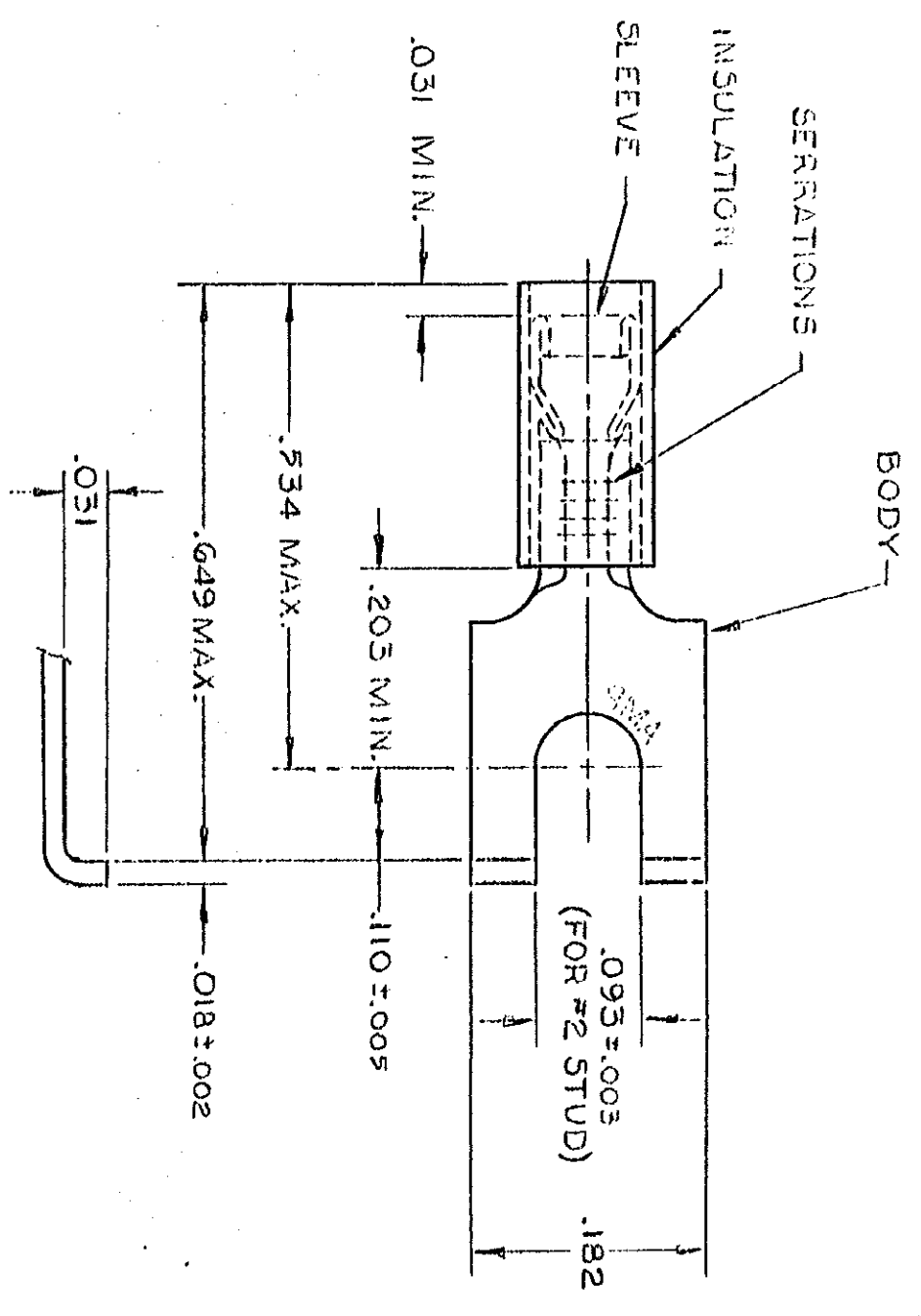


THIS DRAWING IS UNPUBLISHED. RELEASED FOR PUBLICATION

© COPYRIGHT 19 BY AMP INCORPORATED, HARRISBURG, PA. ALL INTERNATIONAL RIGHTS RESERVED. AMP PRODUCTS MAY BE COVERED BY U.S. AND FOREIGN PATENTS AND/OR PATENTS PENDING.



- 1 WIRE INSULATION DIA. = .050-.082
- 2 BODY FINISH = TIN PLATE (MIL-T-10727).000100

P		ZONE	LTR	DESCRIPTION	DATE	APPROVED
✓	✓		J	REDRAWN-REVISED PER G-1479, G-1175, P85-0131 & P85-0132	12/14/85	<i>[Signature]</i>
✓	✓		K	OBSOLETE 2-242-3/6-2393	3/24/87	<i>[Signature]</i>
✓	✓		L	REV PER G-4732	7/22/88	<i>[Signature]</i>
✓	✓		M	REV/0720-0066-93	4-12-93	<i>[Signature]</i>

QUANTITY	DESCRIPTION	PART NO
50	LOOSE PC. BOX	8-324597-2
100	ON TAPE, 500 BOX	2-324597-3
1000	ON TAPE, 1000 BOX	2-324597-2
5000	ON TAPE, REEL	2-324597-1
—	LOOSE PIECE	324597

OBSOLETE
OBSOLETE

UNLESS OTHERWISE SPECIFIED DIMENSIONS ARE IN INCHES. TOLERANCES ON DECIMALS		CONTRACT NO		NAME	
ANGLES ± .003		VTA / RFB 10-2-87		AMP AMP INCORPORATED Harrisburg, Pa.	
MATERIAL INSULATION: NYLON-YELLOW BODY & SLEEVE: COPPER (GG-C576)		CHS <i>[Signature]</i>		TERMINAL, P.I.D.G., FLANGED SPADE WIRE SIZE: 26-22	
FINISH BODY - 2		APPD <i>[Signature]</i>		SIZE B	
		DSGN APPD		FSCM NO 00779	
		OTHER APPD		DRAWING NO 324597	
				SCALE NTS	
				SHEET 1 OF 1	

CUSTOMER DRAWING